

FM/AM Clock Radio

Operating Instructions

ICF-CS10iP

DREAM MACHINE

Dream Machine is a trademark of Sony Corporation.



No Power No Problem is a trademark of Sony Corporation.

©2009 Sony Corporation Printed in China <http://www.sony.net/>

Owner's Record

The model number and the serial number are located on the bottom.

Record the serial number in the space provided below. Refer to them whenever you call upon your Sony dealer regarding this product.

Model No. ICF-CS10iP

Serial No. _____

For customers who purchased this product in the USA Please register this product on line at <http://www.sony.com/productregistration>. Proper registration will enable us to send you periodic mailings about new products, services, and other important announcements. Registering your product will also allow us to contact you in the unlikely event that the product needs adjustment or modification. Thank you.

WARNING

To reduce the risk of fire or electric shock, do not expose this apparatus to rain or moisture.

To reduce the risk of fire, do not cover the ventilation of the apparatus with newspapers, tablecloths, curtains, etc. And do not place lighted candles on the apparatus.

To reduce the risk of fire or electric shock, do not expose this apparatus to dripping or splashing, and do not place objects filled with liquids, such as vases, on the apparatus.

Do not install the appliance in a confined space, such as a bookcase or built-in cabinet.

Do not expose the batteries (battery pack or batteries installed) to excessive heat such as sunshine, fire or the like for a long time.

As the main plug is used to disconnect the unit from the mains, connect the unit to an easily accessible AC outlet. Should you notice an abnormality in the unit, disconnect the main plug from the AC outlet immediately.

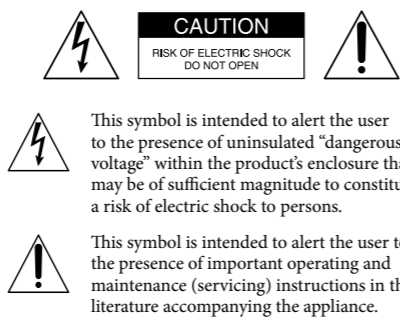
The unit is not disconnected from the AC power source (mains) as long as it is connected to the wall outlet, even if the unit itself has been turned off.

The nameplate and important information concerning safety are located on the bottom exterior.

You are cautioned that any changes or modifications not expressly approved in this manual could void your authority to operate this equipment.

CAUTION

Danger of explosion if battery is incorrectly replaced. Replace only with the same type.



This symbol is intended to alert the user to the presence of uninsulated "dangerous voltage" within the product's enclosure that may be of sufficient magnitude to constitute a risk of electric shock to persons.

This symbol is intended to alert the user to the presence of important operating and maintenance (servicing) instructions in the literature accompanying the appliance.

NOTE

This equipment has been tested and found to comply with the limits for a Class B digital device, pursuant to Part 15 of the FCC Rules. These limits are designed to provide reasonable protection against harmful interference in a residential installation. This equipment generates, uses and can radiate radio frequency energy and, if not installed and used in accordance with the instructions, may cause harmful interference to radio communications. However, there is no guarantee that interference will not occur in a particular installation. If this equipment does cause harmful interference to radio or television reception, which can be determined by turning the equipment off and on, the user is encouraged to try to correct the interference by one or more of the following measures:

- Reorient or relocate the receiving antenna.
- Increase the separation between the equipment and receiver.
- Connect the equipment into an outlet on a circuit different from that to which the receiver is connected.
- Consult the dealer or an experienced radio/TV technician for help.

WARNING

- Replace the battery for the clock backup with a Sony CR2032 lithium battery, and the battery for the remote commander with a Sony CR2025 lithium battery. Use of another battery may present a risk of fire or explosion.
- Battery may explode if mistreated. Do not recharge, disassemble or dispose of in fire.
- Dispose of used battery promptly. Keep away from children.

Important Safety Instructions

- 1) Read these instructions.
- 2) Keep these instructions.
- 3) Heed all warnings.
- 4) Follow all instructions.
- 5) Do not use this apparatus near water.
- 6) Clean only with dry cloth.
- 7) Do not block any ventilation openings. Install in accordance with the manufacturer's instructions.
- 8) Do not install near any heat sources such as radiators, heat registers, stoves, or other apparatus (including amplifiers) that produce heat.
- 9) Do not defeat the safety purpose of the polarized or grounding-type plug. A polarized plug has two blades with one wider than the other. A grounding type plug has two blades and a third grounding prong. The wide blade or the third prong are provided for your safety. If the provided plug does not fit into your outlet, consult an electrician for replacement of the obsolete outlet.
- 10) Protect the power cord from being walked on or pinched particularly at plugs, convenience receptacles, and the point where they exit from the apparatus.
- 11) Only use attachments/accessories specified by the manufacturer.
- 12) Use only with the cart, stand, tripod, bracket, or table specified by the manufacturer, or sold with the apparatus. When a cart is used, use caution when moving the cart/apparatus combination to avoid injury from tip-over.



- 13) Unplug this apparatus during lightning storms or when unused for long periods of time.
- 14) Refer all servicing to qualified service personnel. Servicing is required when the apparatus has been damaged in any way, such as power-supply cord or plug is damaged, liquid has been spilled or objects have fallen into the apparatus, the apparatus has been exposed to rain or moisture, does not operate normally, or has been dropped.

For the state of California, USA only
Perchlorate Material—special handling may apply, see www.dtsc.ca.gov/hazardouswaste/perchlorate
Perchlorate Material: Lithium battery contains perchlorate

Precautions

- Play the unit on the power source specified in "Specifications."
- Since a strong magnet is used for the speaker, keep personal credit cards using magnetic coding or spring-wound watches away from the unit to prevent possible damage from the magnet.
- Do not leave the unit in a location near a heat source such as a radiator or airt duct, or in a place subject to direct sunlight, excessive dust, mechanical vibration, or shock.
- Allow adequate air circulation to prevent internal heat build-up. Do not place the unit on a surface (a rug, a blanket, etc.) or near materials (a curtain) which might block the ventilation holes.
- Should any solid object or liquid fall into the unit, unplug the unit and have it checked by qualified personnel before operating it any further.
- To clean the casing, use a soft cloth dampened with a mild detergent solution.
- Never touch the wire of the external FM antenna during a thunderstorm. Furthermore, immediately disconnect the AC power cord from the radio.

NOTES ON LITHIUM BATTERY

- Wipe the battery with a dry cloth to assure a good contact.
- Be sure to observe the correct polarity when installing the battery.
- Do not hold the battery with metallic tweezers, otherwise a short-circuit may occur.

If you have any questions or problems concerning your unit, please consult your nearest Sony dealer.

Features

- Clock Radio compatible with iPod/iPhone*
- Wake or Sleep to iPod/Radio/Buzzer
- Easy to set A-B alarm
- 2-5-7-day alarm
- LCD Brightness control
- MEGA BASS
- MEGA Xpand
- Wireless Remote Commander
- No Power No Problem alarm system to keep the clock and the alarm operating during a power interruption with a CR2032 battery installed

Specifications

AUDIO POWER SPECIFICATIONS
POWER OUTPUT AND TOTAL HARMONIC DISTORTION:
With 6 ohm loads both channels driven, from 150 Hz -10,000 Hz; rated 3 watts per channel minimum RMS power, with no more than 10 % total harmonic distortion.

Time display
12-hour system

Section for iPod

DC out: 5V
MAX: 500mA

Radio section

Frequency range

Band	Frequency	Channel step
FM	87.5 MHz – 108 MHz	0.1 MHz
AM	530 kHz – 1 710 kHz	10 kHz

General

Speaker

Approx. 5.7 cm (2 1/4 inches) dia. 6 Ω

Input

AUDIO IN jack (ø 3.5 mm stereo minijack)

Power output

3.5 W + 3.5 W (at 10% harmonic distortion)

Power requirements

120 V AC, 60 Hz

For clock back up: 3V DC, CR2032 battery (1)

Dimensions

Approx. 290.5 mm × 152.0 mm × 139.5 mm (w/h/d)
(11 3/8 inches × 5 13/16 inches × 5 1/2 inches) including projecting parts and controls

Mass

Approx. 1.94 kg (4 lb 4 oz) including power supply unit

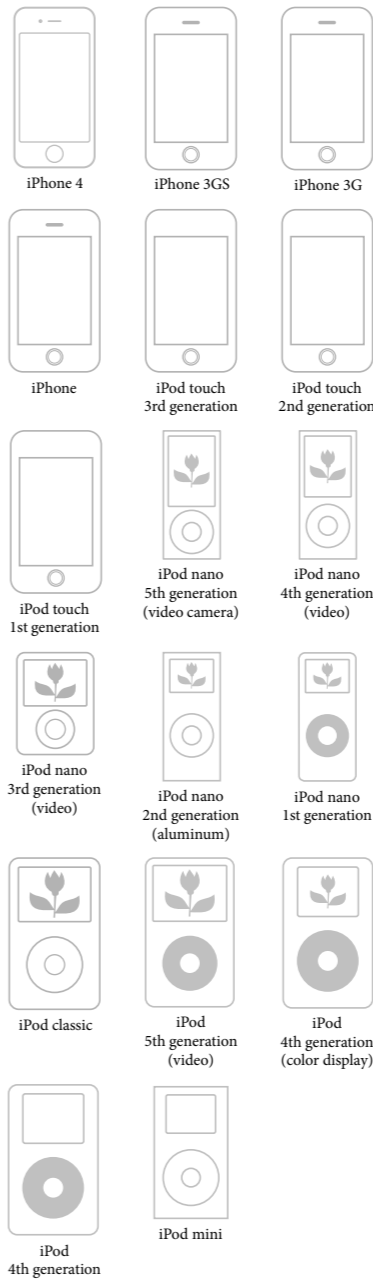
Supplied accessories

- Remote commander (1)
- AM loop antenna (1)
- Audio connecting cable (1)
- Universal Dock Adapter for iPhone (1)
- Universal Dock Adapter for iPhone 3G & iPhone 3GS (1)
- Universal Dock Adapter for iPhone 4 (1)

Design and specifications are subject to change without notice.

Compatible iPod/iPhone models

Compatible iPod/iPhone models are as follows. Update your iPod/iPhone to use the latest software before you use it.



Notes

- In these Operating Instructions, "iPod" is used as a general reference to iPod functions on an iPod or iPhone, unless otherwise specified by the text or illustrations.
- The connector of the unit is for sole use with an iPod. If you use devices that do not match with the connector, connect to the **AUDIO IN** jack of this unit with the supplied audio connecting cable.
- Sony cannot accept responsibility in the event that data recorded to an iPod is lost or damaged when using an iPod connected to this unit.

Troubleshooting

Should any problem persist after you have made the following checks, consult your nearest Sony dealer.

The clock flashes "AM 12:00" due to a power interruption.

- The battery is low. Replace the battery. Remove the old battery and install a new one.

The radio, iPod or buzzer alarm does not sound at the preset alarm time.

- Check that alarm "A" or alarm "B" is properly displayed.

The radio or alarm of iPod is activated but no sound comes on at the preset alarm time.

- Check the alarm volume setting.

There is no sound from the iPod.

- Make sure the iPod is securely connected.
- Adjust the **VOLUME**.

The iPod cannot be operated with this unit.

- Make sure the iPod is securely connected.

The iPod cannot be charged.

- Make sure the iPod is securely connected.

When Daylight Saving Time (summer time) begins, the clock does not employ the Daylight Saving Time automatically.

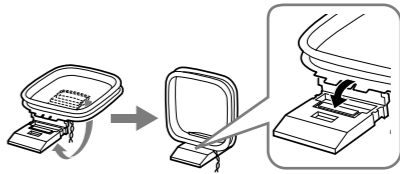
- Make sure the clock is set correctly.
- Press and hold **CLOCK** and **SNOOZE/DATE/SLEEP OFF** simultaneously for at least 2 seconds to activate the Automatic DST function.

Connecting the antenna

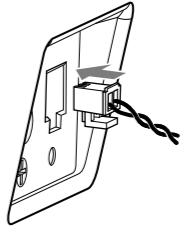
To connect the AM loop antenna

The shape and the length of the antenna is designed to receive AM signals. Do not dismantle or roll up the antenna.

- 1 Remove only the loop part from the plastic stand.
- 2 Set up the AM loop antenna.

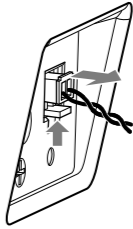


- 3 Insert the AM antenna terminal into the **AM ANTENNA** jack on the rear of the unit.



To remove the AM loop antenna

Pull the AM antenna terminal while pushing up the terminal clamp.



Adjusting the AM loop antenna

Find a place and an orientation that provide good reception.

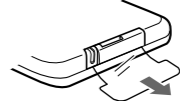
- Do not place the AM loop antenna near the unit or other AV equipment, as noise may result.

Tip

Adjust the direction of the AM loop antenna for best AM broadcast sound.

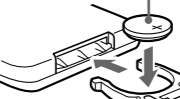
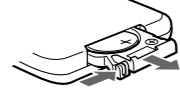
Preparing the remote commander

Before using the card remote commander for the first time, remove the insulation film.



To know when to replace the battery

With normal use, the battery (CR2025) should last for about six months. When the remote commander no longer operates the unit, replace the battery with a new one.



Notes

- Do not attempt to charge the battery.
- If you are not going to use the remote commander for a long time, remove the battery to avoid any damage that may be caused by leakage and corrosion.

About the backup battery

To keep accurate time, this unit contains a CR2032 battery as a backup power source. The battery keeps the clock and the alarm operating in the event of a power interruption.

To know when to replace the battery

When the battery becomes weak, "☺" appears in the display. If a power interruption occurs while the battery is weak, the current time and alarm will be erased. Replace the battery with a Sony CR2032 lithium battery. Use of another battery may cause a fire or explosion.

Note

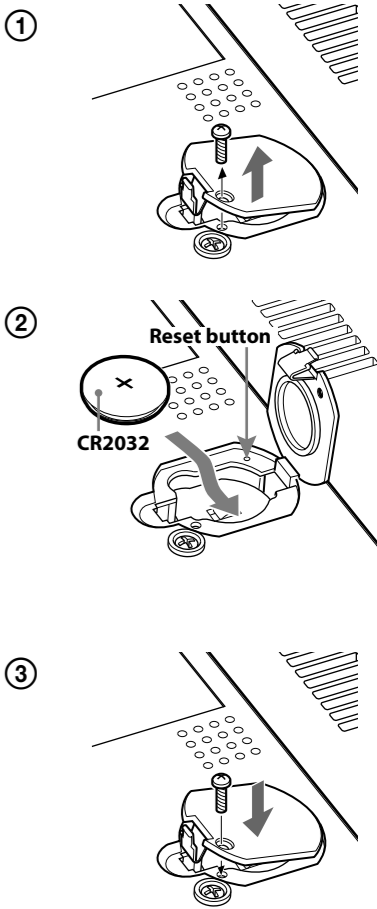
If "AM 12:00" flashes in the display when the unit is connected to an AC outlet for the first time, the battery may be weak. In this case, consult your Sony dealer.

To replace the battery

- 1 Keep the AC plug connected to the AC outlet, remove the screw that secures the battery compartment lid at the bottom of the unit using a screwdriver, and open the lid (see Fig. ①).
- 2 Insert a new battery in the battery compartment with the **+** side facing up (see Fig. ②).
- 3 Close the battery compartment lid and secure it with the screw (see Fig. ③).
- 4 Press **iPod & iPhone** **▶||**, **RADIO BAND, AUDIO IN** or **SNOOZE/DATE/SLEEP OFF** to turn "☺" off in the display.

Note

When you replace the battery, do not disconnect the plug from the AC outlet. Otherwise, the calendar, current time, alarm and station presets will be erased.



If the time in the display is incorrect after the battery is changed (Reset)

Press the reset button with a pointed device. The reset button is in the small hole located in the battery compartment (see Fig. ②).

